

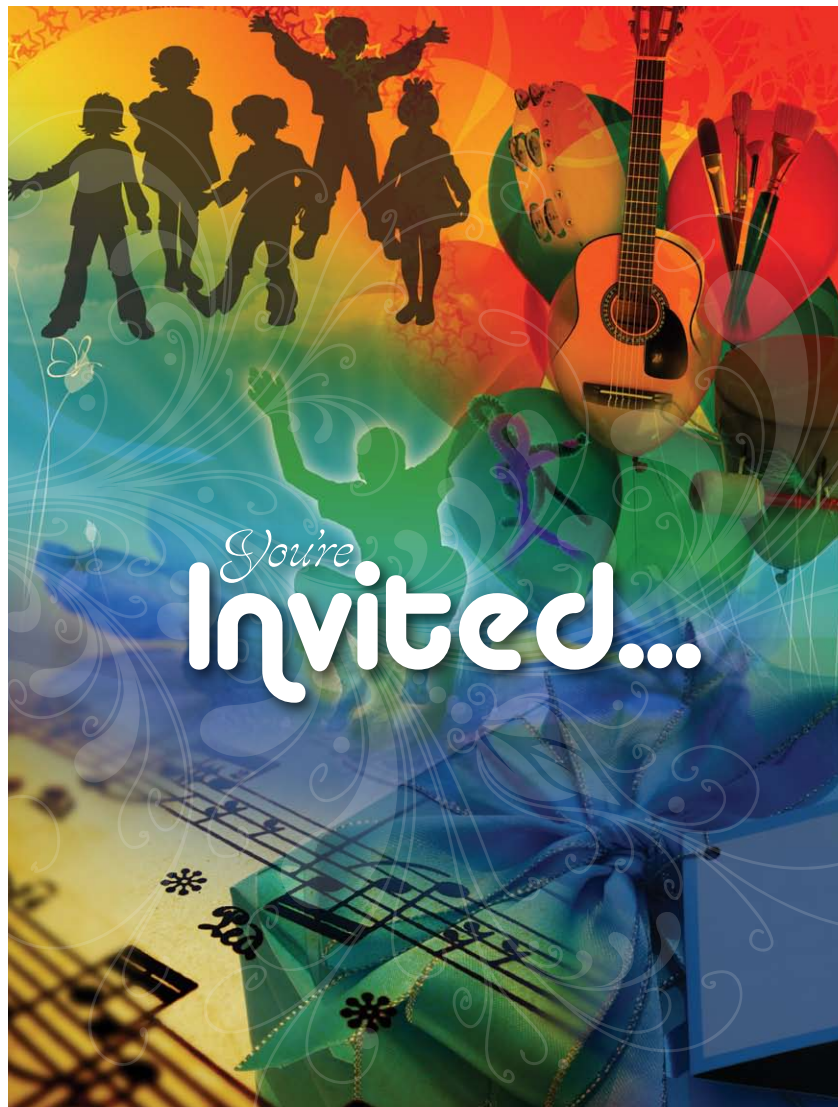
Cut Line

Fold Line

Cut Line

Cut Line

Cut Line



Cut Line : For best invitation results, print both sides of your invitation on the same piece of paper, front to back (printer functions/layout may vary, so you may need to experiment) fold on the fold line, then use a paper cutter or straight edge with

an exacto knife or other method to follow the cut lines and cut as closely to the color as possible. Voilà! Use a standard "invitation size" envelope measuring 4 3/8" x 5 3/4". Trim if necessary.

Cut Line

Cut Line

Fold Line

Cut Line